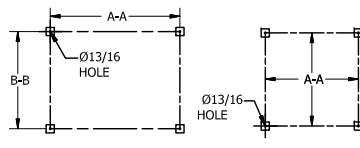


REVISIONS			
REV	DESCRIPTION	DATE	BY

MODEL	SQ. FT. OF MEDIA	NO. OF CARTS	A	B	D	E		G		K		Q		Y (SF)		Z		SCFM	MAX WEIGHT (LBS.)						
						STD	X-VENT	F	H	J	STD	X-VENT	L	M	N	HIGH	LOW	V	W	X	Y (SF)	45F	95F	SCFM	MAX WEIGHT (LBS.)
24CSER2	58.8	2	28	38 7/8	40 3/4	89 5/16	---	15 5/16	10	7	5 3/16	---	43 3/8	27	34 9/16	27 5/16	12 9/16	13 15/16	19 3/8	30 1/4	---	---	---	1.6	510
24CSER3	88.2	3	36	48 3/8	47 1/2	97 7/16	98 1/2	16 1/4	20 1/8	7	7 1/16	8 1/8	49 3/8	44 27	35 1/2	44 27 5/16	44 12 9/16	19 1/16	19 3/8	31 3/16	4	26 7/16	---	1.6	690
24CSER4	117.6	4	36	48 3/8	47 1/2	97 7/16	98 1/2	16 1/4	20 1/8	7	7 1/16	8 1/8	49 3/8	44 27	35 1/2	44 27 5/16	44 12 9/16	19 1/16	19 3/8	31 3/16	4	26 7/16	---	1.6	710
39CSER4	200.4	4	47	38 3/8	57	108 11/16	110 1/4	23 5/16	20 1/8	7	8 13/16	10 3/8	62 7/16	27	42 5/16	27 5/16	12 9/16	19 1/16	36 1/8	38	4	24 3/8	---	3.0	1000
39CSER5	250.5	5	54	38 3/8	63	115 3/8	117 1/8	25 3/4	25 1/4	7	9 1/2	11 1/4	67 3/16	27	44 11/16	27 5/16	12 9/16	21 5/8	36 1/8	40 3/8	4	24 3/8	---	3.0	1300
39CSER6	300.6	6	60	38 3/8	68 1/4	121 15/16	123 7/8	27 5/8	30 3/8	7	10 13/16	12 3/4	72 3/4	44 1/4	47 1/2	27 5/16	12 9/16	24 3/16	36 1/8	42 3/8	4	24 3/8	---	3.0	1440
39CSER8	400.8	8	47	59	57	129 5/16	130 7/8	23 5/16	20 1/8	11 5/16	8 13/16	10 3/8	62 7/16	44 1/4	45 11/16	42 15/16	17 9/16	19 1/16	36 1/8	39 3/16	4 & 9	45	39	6.3	1480
39CSER10	501	10	54	59	63	136	137 3/4	25 13/16	25 1/4	11 5/16	9 1/2	11 1/4	67 3/16	44 1/4	48 1/16	42 15/16	17 9/16	21 5/8	36 1/8	41 11/16	4 & 9	45	39	6.3	1740
39CSER12	601.2	12	60	59	68 1/4	142 9/16	144 1/2	27 5/8	30 3/8	11 5/16	10 13/16	12 3/4	72 3/4	44 1/4	49 7/8	42 15/16	17 9/16	24 1/4	36 1/8	43 1/2	4 & 9	45	39	6.3	2050

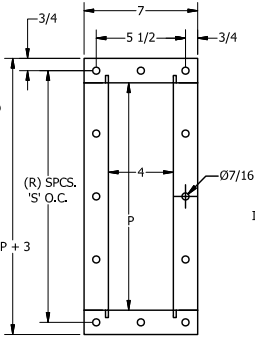
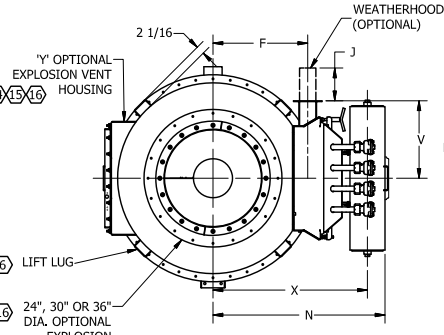


LEG PAD LAYOUT		
MODEL	A-A	B-B
24CSER2	49	29 3/8
24CSER3/4	49 3/8	36 7/8
39CSER4/8	63 7/8	47 7/8
39CSER5/10	70 7/8	54 7/8
39CSER6/12	45 7/8	N/A

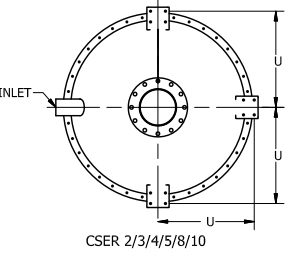
HOPPER SCHEDULE ('C' DIMENSION)							
AIRLOCK FLANGE	T' DIA.	DCSH.	24CSER 2	24CSER 3/4	CSER 4/8	CSER 5/10	CSER 6/12
RAM06	6	19 7/16	26 3/8	35 7/8	41 15/16	N/A	N/A
RAM08, MD20	8	17 3/4	24 11/16	34 3/16	40 1/4	45 7/16	
RAM10, MD40	10	16	22 15/16	32 1/2	38 9/16	43 3/4	
RAM12, MD75	12	N/A	21 1/4	30 3/4	36 13/16	42	
RAM14	14	N/A	N/A	29	35 1/16	40 1/4	
RAM16, MD139	16	N/A	N/A	27 5/16	33 3/8	38 9/16	

MOUNT PAD LAYOUT	
MODEL	U
24CSER2	15 7/8
24CSER3/4	21 1/2
39CSER4/8	26 15/16
39CSER5/10	30 7/16
39CSER6/12	33 5/8

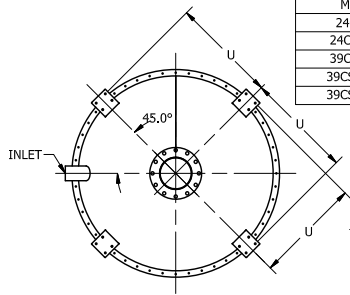
- GENERAL NOTES:
- ALL DIMENSIONS ARE IN INCHES.
 - UNIT CONSTRUCTION FOR 17" HG INTERNAL VACUUM.
 - NEMA 4X POLYCARBONATE TIMER ENCLOSURE, STANDARD, 110VAC REQUIRED, 24VDC OPTIONAL.
 - 1" FNPT, 60-80 PSIG, CLEAN, DRY AIR REQUIRED. SEE SCFM IN TABLE FOR VOLUME OF FREE AIR CONSUMPTION PER PULSE.
 - 1/8" FNPT, MUST HAVE A PLUG, IF DIFFERENTIAL PRESSURE GAUGE IS NOT USED. IF SUPPLIED, TO BE FIELD INSTALLED BY CUSTOMER.
 - LIFTING LUG QUANTITY AND LOCATION VARY WITH MODELS.
 - UNLESS OTHERWISE SPECIFIED ORIENTATION SHOWN IN STANDARD.
 - DIMENSION REFERENCES THE ACCESS DOOR OPENING INSIDE THE PLENUM.
 - MAY VARY PER JOB.
 - HOPPER IS A CONSTANT 60°, 'C' WILL VARY WITH THE SIZE OF THE DISCHARGE. DIMENSION 'C' IS BASED ON USING A 1/4" THK. DISCHARGE FLANGE EXCEPT 8" IS 3/16" THK.
 - ADD 4" TO THE OVERALL STACK UP AND LEGS ON 24CSER2, IF MATING AIRLOCK IS EQUIPPED WITH R/A REDUCER AND X-PL PROOF MOTOR. 4" EXTENSION MUST BE BOLTED BETWEEN AIRLOCK AND HOPPER.
 - 39CSER6 AND 39CSER12 HAVE BOLTED LEGS RATHER THAN SUPPORT FRAME. BE BOLTED BETWEEN AIRLOCK AND HOPPER.
 - HEADER WELDMENT DESIGNED PER ASME SECTION VIII DIVISION 1 CODE FOR NON-FIRED PRESSURE VESSELS.
 - IF FILTER TO HAVE SIDE MOUNT EXPLOSION VENT, BAGHOUSE HEIGHT TO BE INCREASED 2".
 - 45F (SQ. FT.) X-VENT IS 24" X 24" 95F (SQ. FT.) X-VENT IS 36" X 36"
 - SIZE OF RUPTURE STYLE EXPLOSION VENT, IF REQUIRED, IS DETERMINED PER JOB TO MEET THE REQUIREMENTS OF NFPA 68. ORIENTATION OF VENT MAY VARY.
 - EXHAUST CAN BE SWITCHED TO OTHER SIDE DEPENDING ON CONFIGURATION.
 - ESTIMATED WEIGHT IS FOR FILTER WITH 'T' DISCHARGE AND CARTRIDGES ONLY. IT DOES NOT INCLUDE OPTIONAL ITEMS.



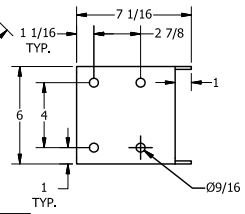
EXHAUST FLANGE SCHEDULE			
CSER	P	R	S
2/3/4/5/6	14	4	3 7/8
8/10/12	24	6	4 1/2



MOUNT PAD LAYOUT



MOUNT PAD LAYOUT

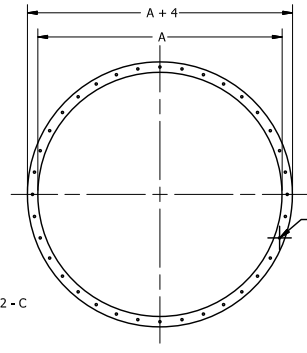
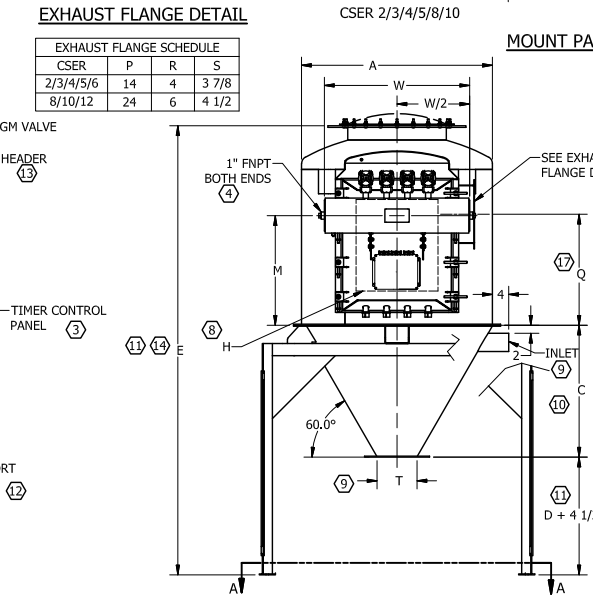
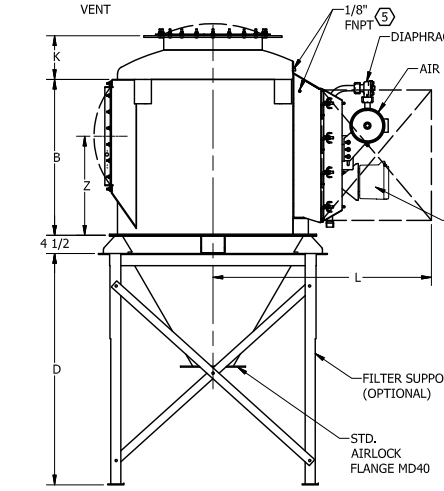


MOUNT PAD DETAIL BOTTOM VIEW

CSER FLANGE SCHEDULE		
MODEL	CC	DD
24CSER2	30	16
24CSER3/4	38	24
39CSER4/8	49	36
39CSER5/10	56	36
39CSER6/12	62	48

- FINISH NOTES:
- EXTERIOR WELDS CONTINUOUS WHERE POSSIBLE AND CLEANED FREE OF WELD SLAG AND SPLATTER.
 - INTERIOR PLENUM WELDS ARE SKIP WELDED (NON-CONTINUOUS) AND CLEANED FREE OF WELD SLAG AND SPLATTER.
 - EXTERIOR CONTACT WELDS ARE SKIP WELDED (NON-CONTINUOUS) AND CLEANED FREE OF WELD SLAG AND SPLATTER.
 - EXTERIOR PAINTED SHERWIN WILLIAMS POLANE D8700 DTM URETHANE PAINT (RAL9003 SIGNAL WHITE). SURFACE PREPARATION: SSPC-SP1 AND SSPC-SP2.
 - INTERIOR CLEAN AIR PLENUM: PRIMED OR PAINTED FOR RUST PREVENTION. SURFACE PREPARATION: SSPC-SP1 AND SSPC-SP2.

- SHIPPING NOTES:
- ALL OPENINGS TO BE COVERED PRIOR TO SHIPMENT.
 - GASKETS OR SILICONE CAULK REQUIRED.



FLANGE DETAIL

LEGENDS EQUIPMENT
(613) 337-9745
LEGENDSEQUIPMENT.COM

THIS DRAWING IS THE PROPERTY OF LEGENDS EQUIPMENT CO. IT IS TO BE USED ONLY FOR THE PROJECT AND SHALL NOT BE REPRODUCED OR TRANSMITTED IN ANY MANNER OR BY ANY MEANS, WITHOUT THE WRITTEN PERMISSION OF LEGENDS EQUIPMENT CO.

CSER FILTER RECEIVER
SALES DATA
GENERAL DIMENSIONS

DATE: 8-16-22 DRAWING NO.: CSER REV: F

