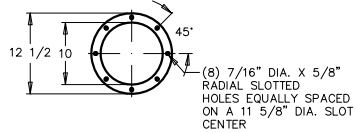
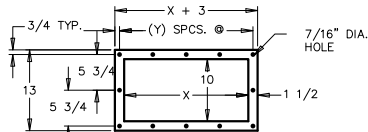


STUB EXHAUST DETAIL
OPTIONAL



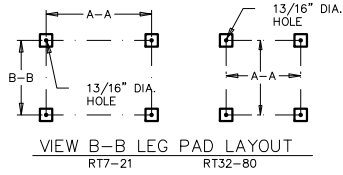
10" DIA. EXHAUST FLANGE



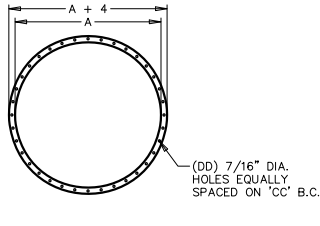
RECTANGULAR EXHAUST FLANGE DETAIL

SIZE	10X20	10X30	10X45
X	20	30	45
Y	4	6	8
Z	5 3/8	5 1/4	5 13/16

RT	7	14	21	32	39	52	62	80
A-A	49	53	63 7/8	45 7/8	50 3/16	54 7/16	62 15/16	69 5/16
B-B	29 3/8	41 5/8	47 7/8	---	---	---	---	---



RT FLANGE SCHEDULE			
RT	A	CC	DD
7	28	30	16
14	40	42	24
21	47	49	36
32	60	62	48
39	66	68	48
52	72	74	48
62	84	86	48
80	93	95	48



RT FLANGE DETAIL

GENERAL NOTES:

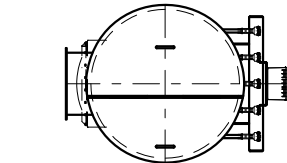
- ALL DIMENSIONS ARE IN INCHES.
- UNIT CONSTRUCTION FOR 17" HG OR 40" W.C.
- NEMA 4X POLYCARBONATE TIMER ENCLOSURE, STANDARD, 110VAC REQUIRED, 24VDC OPTIONAL.
- 3/4" FNPT, 90-100 PSIG, CLEAN, DRY AIR REQUIRED. SEE SCFM FOR VOLUME.
- 1/8" FNPT MUST HAVE PIPE PLUG IF DIFFERENTIAL PRESSURE GAUGE IS NOT USED. IF SUPPLIED, TO BE FIELD INSTALLED BY CUSTOMER.
- LIFTING LUG QUANTITY AND LOCATION VARY W/ MODELS.
- UNLESS OTHERWISE SPECIFIED, ORIENTATION SHOWN IS STANDARD.
- DIMENSION INCLUDES TUBESHEET THICKNESS.
- MAY VARY PER JOB.
- HOPPER IS A CONSTANT 60°. 'C' WILL VARY WITH THE SIZE OF THE DISCHARGE. DIMENSION 'C' IS BASED ON USING A 1/4" THK. DISCHARGE FLANGE, EXCEPT 8" IS 3/16" THK.
- ADD 4" TO THE OVERALL STACK UP AND LEGS ON RT7, IF MATING AIRLOCK IS EQUIPPED WITH R/A REDUCER AND X-PL PROOF MOTOR. 4" EXTENSION MUST BE BOLTED BETWEEN HOPPER AND AIRLOCK.
- MAXIMUM AIRLOCK IS THE LARGEST AIRLOCK THAT WILL FIT UNDER ASSEMBLY WITH STANDARD LEG FRAME.
- RT32 AND LARGER HAVE BOLTED LEGS RATHER THAN SUPPORT FRAME.
- IF FILTER TO HAVE EXPLOSION VENT, BAGHOUSE HEIGHT TO BE INCREASED TO VALUE IN 'B' X-VENT COLUMN.
- 45F (SQ. FT.) X-VENT IS 24"x24" 95F (SQ. FT.) X-VENT IS 36"x36"
- SIZE OF RUPTURE STYLE EXPLOSION VENT, IF REQUIRED, IS DETERMINED PER JOB TO MEET THE REQUIREMENTS OF NFPA 68. ORIENTATION OF VENT MAY VARY.
- ESTIMATED WEIGHT IS FOR FILTER WITH 'J' DISCHARGE, BAGS AND CAGES ONLY. IT DOES NOT INCLUDE OPTIONAL ITEMS.

FINISH NOTES:

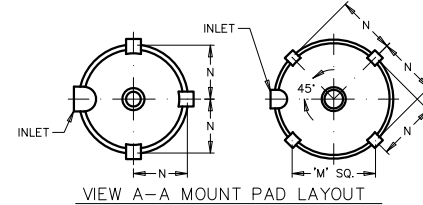
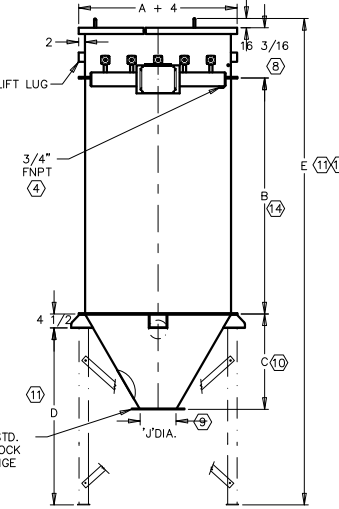
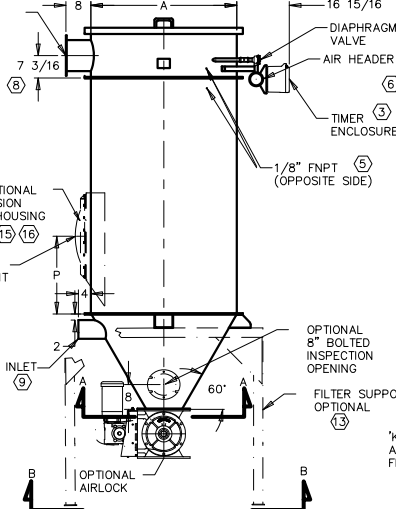
- EXTERIOR WELDS CONTINUOUS WHERE POSSIBLE AND CLEANED FREE OF WELD SLAG AND SPLATTER.
- INTERIOR PLENUM WELDS ARE SKIP WELDED (NON-CONTINUOUS) AND CLEANED FREE OF WELD SLAG AND SPLATTER.
- PRODUCT CONTACT WELDS ARE SKIP WELDED (NON-CONTINUOUS) AND CLEANED FREE OF WELD SLAG AND SPLATTER.
- EXTERIOR PAINTED SHERWIN WILLIAMS POLANE D8700 DTM URETHANE PAINT (RAL9003 SIGNAL WHITE). SURFACE PREPARATION: SSPC-SP1 AND SSPC-SP2.
- INTERIOR CLEAN AIR PLENUM: PRIMED OR PAINTED FOR RUST PREVENTION. SURFACE PREPARATION: SSPC-SP1 AND SSPC-SP2.

SHIPPING NOTES:

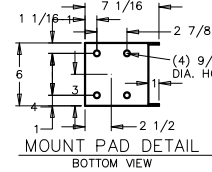
- ALL OPENINGS TO BE COVERED PRIOR TO SHIPMENT.
- GASKETS OR SILICONE CAULK REQUIRED.



'G' EXHAUST
SEE EXHAUST
FLANGE DETAIL



VIEW A-A MOUNT PAD LAYOUT
RT7-21 RT32-80



MOUNT PAD DETAIL
BOTTOM VIEW

MODEL	CLOTH AREA	NO. OF BAGS	B				E		G	J	K	O	P		MAXIMUM AIRLOCK	SCFM	WEIGHT LBS.	
			STD	X-VENT	C	D	STD	X-VENT					45F	95F			17" HG	40" W.C.
18RT7	15		22	N/A	17 3/4	40 3/4	86 7/16	N/A	10 DIA.	8	MD20	N/A	N/A	N/A	MD40	3.3	550	510
36RT7	32		40	N/A	17 3/4	40 3/4	104 7/16	N/A	10 DIA.	8	MD20	N/A	N/A	N/A	MD40	3.3	630	580
54RT7	48		58	N/A	17 3/4	40 3/4	122 7/16	N/A	10 DIA.	8	MD20	N/A	N/A	N/A	MD40	3.3	700	640
72RT7	65		76	N/A	17 3/4	40 3/4	140 7/16	N/A	10 DIA.	8	MD20	N/A	N/A	N/A	MD40	3.3	780	700
18RT14	30		22	N/A	26 7/16	51	96 11/16	N/A	10 DIA.	10	MD40	N/A	N/A	N/A	MD40	4.2	900	820
36RT14	64		40	64	26 7/16	51	114 11/16	138 11/16	10 DIA.	10	MD40	45F	25	N/A	MD40	4.2	1020	910
54RT14	97		58	76	26 7/16	51	132 11/16	150 11/16	10 DIA.	10	MD40	45F	25	N/A	MD40	4.2	1130	1000
72RT14	131		76	94	26 7/16	51	150 11/16	168 11/16	10 DIA.	10	MD40	45F	25	N/A	MD40	4.2	1250	1100
96RT14	175		100	118	26 7/16	51	174 11/16	192 11/16	10 DIA.	10	MD40	45F	25	N/A	MD40	4.2	1400	1220
36RT21	96		40	64	32 1/2	57	120 11/16	144 11/16	10X20	10	MD40	45F & 95F	25	38 1/2	MD40	5.4	1350	1200
54RT21	146		58	76	32 1/2	57	138 11/16	156 11/16	10X20	10	MD40	45F & 95F	25	38 1/2	MD40	5.4	1530	1340
72RT21	196		76	94	32 1/2	57	156 11/16	174 11/16	10X20	10	MD40	45F & 95F	25	38 1/2	MD40	5.4	1710	1480
96RT21	263		100	118	32 1/2	57	180 11/16	198 11/16	10X20	10	MD40	45F & 95F	25	38 1/2	MD40	5.4	1950	1660
54RT32	223		58	76	43 3/4	68 1/4	149 15/16	167 15/16	10X20	10	MD40	45F & 95F	25	34	MD40	6.5	2110	1840
72RT32	299		76	94	43 3/4	68 1/4	167 15/16	185 15/16	10X20	10	MD40	45F & 95F	25	34	MD40	6.5	2340	2020
96RT32	401		100	118	43 3/4	68 1/4	191 15/16	209 15/16	10X20	10	MD40	45F & 95F	25	34	MD40	6.5	2650	2270
54RT39	271		58	76	48 15/16	73 1/2	155 3/16	173 3/16	10X30	10	MD40	45F & 95F	25	34	MD40	7.5	2390	2090
72RT39	365		76	94	48 15/16	73 1/2	173 3/16	191 3/16	10X30	10	MD40	45F & 95F	25	34	MD40	7.5	2650	2300
96RT39	489		100	118	48 15/16	73 1/2	197 3/16	215 3/16	10X30	10	MD40	45F & 95F	25	34	MD40	7.5	3000	2580
72RT52	486		76	94	54 1/8	78 5/8	178 5/16	196 5/16	10X30	10	MD40	95F	N/A	34	MD40	9.1	3130	2740
96RT52	652		100	118	54 1/8	78 5/8	202 5/16	220 5/16	10X30	10	MD40	95F	N/A	34	MD40	9.1	3510	3040
72RT62	580		76	94	62 13/16	89 1/4	188 15/16	206 15/16	10X45	12	MD75	95F	N/A	34	MD139	10.6	3920	3580
96RT62	778		100	118	62 13/16	89 1/4	212 15/16	230 15/16	10X45	12	MD75	95F	N/A	34	MD139	10.6	4400	3940
72RT80	748		76	94	67 1/8	97	196 11/16	215 11/16	10X45	16	MD139	95F	N/A	34	MD139	13.2	4540	3980
96RT80	1004		100	118	67 1/8	97	220 11/16	238 11/16	10X45	16	MD139	95F	N/A	34	MD139	13.2	5090	4380

'J' DIA. DISCHARGE	HOPPER SCHEDULE							
	RT FILTER							
	7	14	21	32	39	52	62	80
8	17 3/4	28 3/16	34 3/16	45 7/16	---	---	---	---
10	16	26 7/16	32 1/2	43 3/4	48 15/16	54 1/8	64 1/2	72 5/16
12	---	24 11/16	30 3/4	42	47 3/16	52 7/16	62 13/16	70 9/16
14	---	22 15/16	29	40 1/4	45 1/2	50 11/16	61 1/16	68 13/16
15	---	---	28 3/16	39 7/16	44 5/8	49 13/16	60 3/16	68
16	---	---	27 5/16	38 9/16	43 3/4	48 15/16	59 5/16	67 1/8
18	---	---	25 9/16	36 13/16	42	47 3/16	57 5/8	65 3/8
19	---	---	24 11/16	35 15/16	41 1/8	46 5/16	56 3/4	64 9/16

RT	7	14	21	32	39	52	62	80
N	15 7/8	22	25 1/2	32 1/16	35 1/8	38 1/8	44 1/8	48 5/8
M	---	---	---	45 3/8	49 5/8	53 7/8	62 7/16	68 3/4

LEGENDS EQUIPMENT

RT FILTER RECEIVER SALES DATA GENERAL DIMENSIONS

LEGENDS EQUIPMENT