

Explosion Proof Industrial Vacuum



**DUST REAPER
SERIES 1500XP**

**1001 2ND AVE
DAYTON, KY 41074**

**(513) 337-9745
WWW.LEGENDSEQUIPMENT.COM**

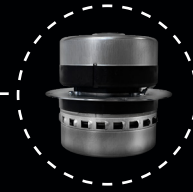
2 HP
POWER

930 in²
FILTER

11 gal
CAPACITY



Head with double stage filtration system.



BRUSHLESS MOTOR
120 V



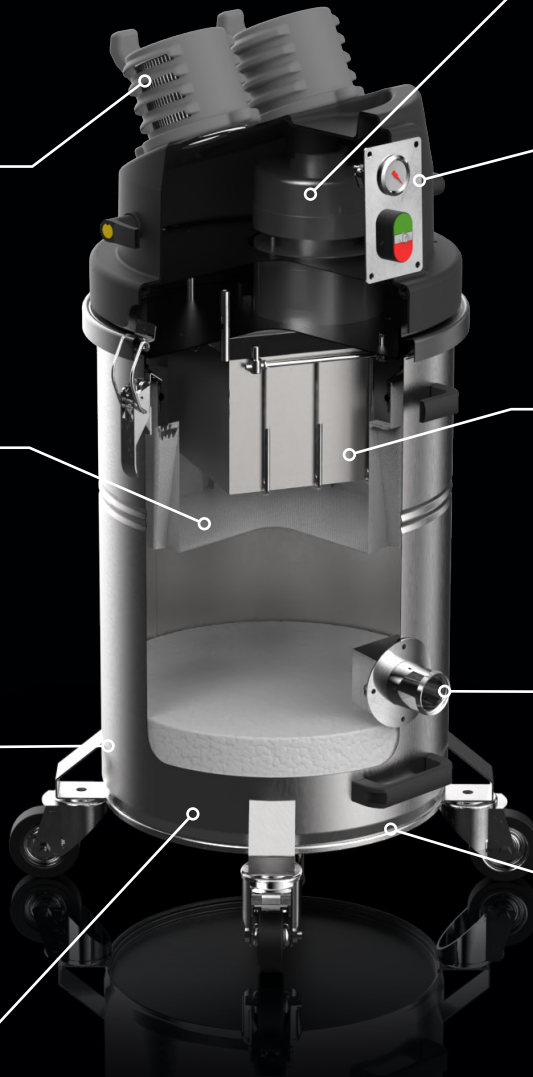
**M CLASS
ANTISTATIC
STAR FILTER**



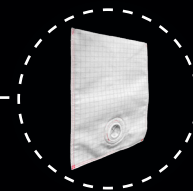
**[OPTIONAL]
FILTER CARTRIDGE
HEPA H14**



**ALL COMPONENTS
ARE GROUNDED**



**INLET
WITH DEFLECTOR Ø 2 in**



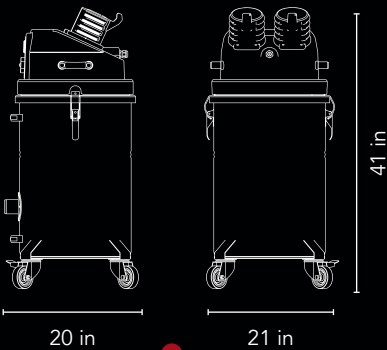
**[OPTIONAL]
DISPOSAL FILTER BAG
M CLASS**



**STAINLESS STEEL BIN
AISI 304**

11gal

HIGHLY TRANSPORTABLE



Weight: 83 lbs

EASY TO EMPTY



NFPA 652 Compliance



ATEX Marking:
II 3 D Ex htc III B T140°C Dc

SPEC SHEET

Suction type
Atex Marking
Power
Voltage Frequency
Maximum vacuum
Maximum air flow
Inlet
Noise level - (EN ISO 3744)
Bin capacity
Dimensions
Height
Weight

Primary filter

Type
Surface area
(Class EN 60335-2-69)
Media

Primary filter - Optional

(Class - EN 1822)
Media
In suction
In suction
Engine air inlet cooling
Outgoing engine air cooling

Units

	Brushless motor
	II 3 D Ex htc III B T140°C Dc
HP	2 1 ~
V/Hz	120 50
inH2O	92
CFM	129
Ø in	2
dB(A)	72
gal	11
in	20.32 X 21.46
in	41.33
lb	83.78

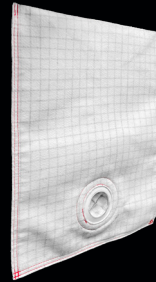
	Star filter
in² in	930 - 14.56
	M Class
	Antistatic polyester

	H 14
	Fiberglass
	Opt H14
	E 10
	E 10
	E 10

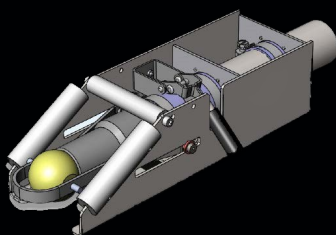
ACCESSORIES



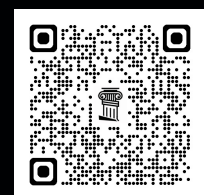
ANTISTATIC HOSE & ACCESSORIES



DISPOSABLE ANTISTATIC FILTER BAG



VACTRAC SYSTEM



OVER HEAD CARBON FIBER TOOLS

